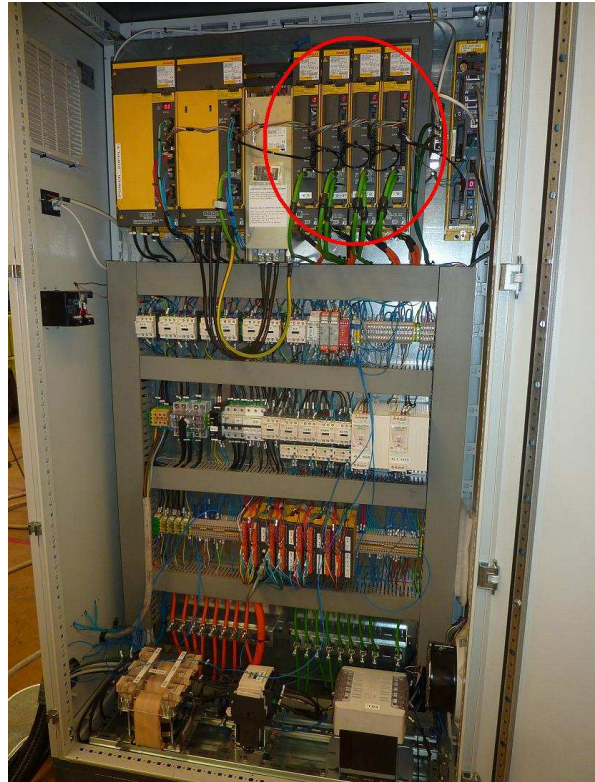
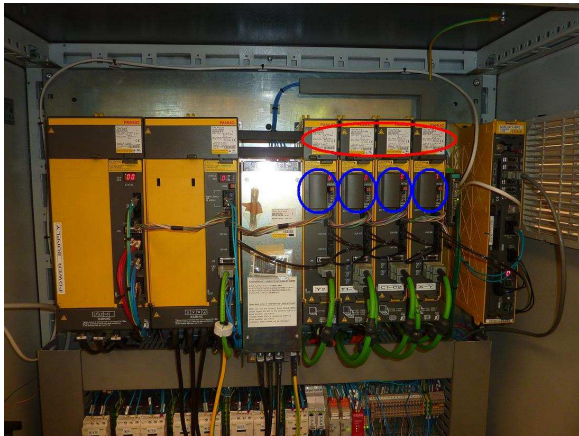


INSTRUCTION TO FIND BATTERY MODEL FOR FANUC SERVO AMPLIFIER

In the electrical panel, find Fanuc servo amplifiers (in pictures, black and yellow modules, labelled as X, Y, C1, C2, T1, T2, P; disposition of axis could be different, it depends on your machine model)



In top side of every servo amplifier, read Fanuc label to know the model of servo amplifier.

Every servos have a precise code, for example A06B-6096-H208.

The third number from RIGHT of this code (number after H letter) says which kind of battery this servo needs.

Fanuc batteries can be:

- Alpha (code BR-2/3AGCT4A)
- Beta (code BR-AGCF2W)



In this table you can find the correspondence:

Number after H	Battery	Code
0	Beta	BR-AGCF2W
2	Alpha	BR-2/3AGCT4A
3	Alpha	BR-2/3AGCT4A

SUBSTITUTION OF BATTERIES

WITH MACHINE TURNED ON

Remove the little cover (blue circle in picture)

Remove connector of battery from servo

Remove battery from servo

Insert connector of new battery

Insert new batteries in box of servo

Insert the cover

